

View Point

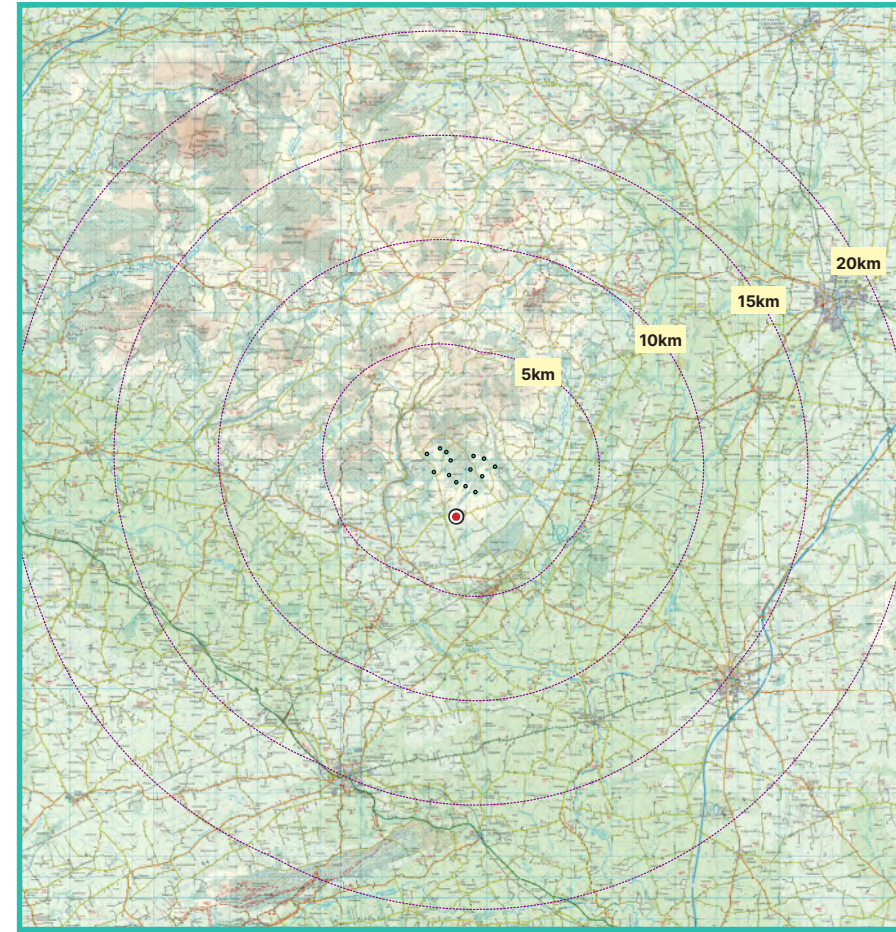
10

Scarrough

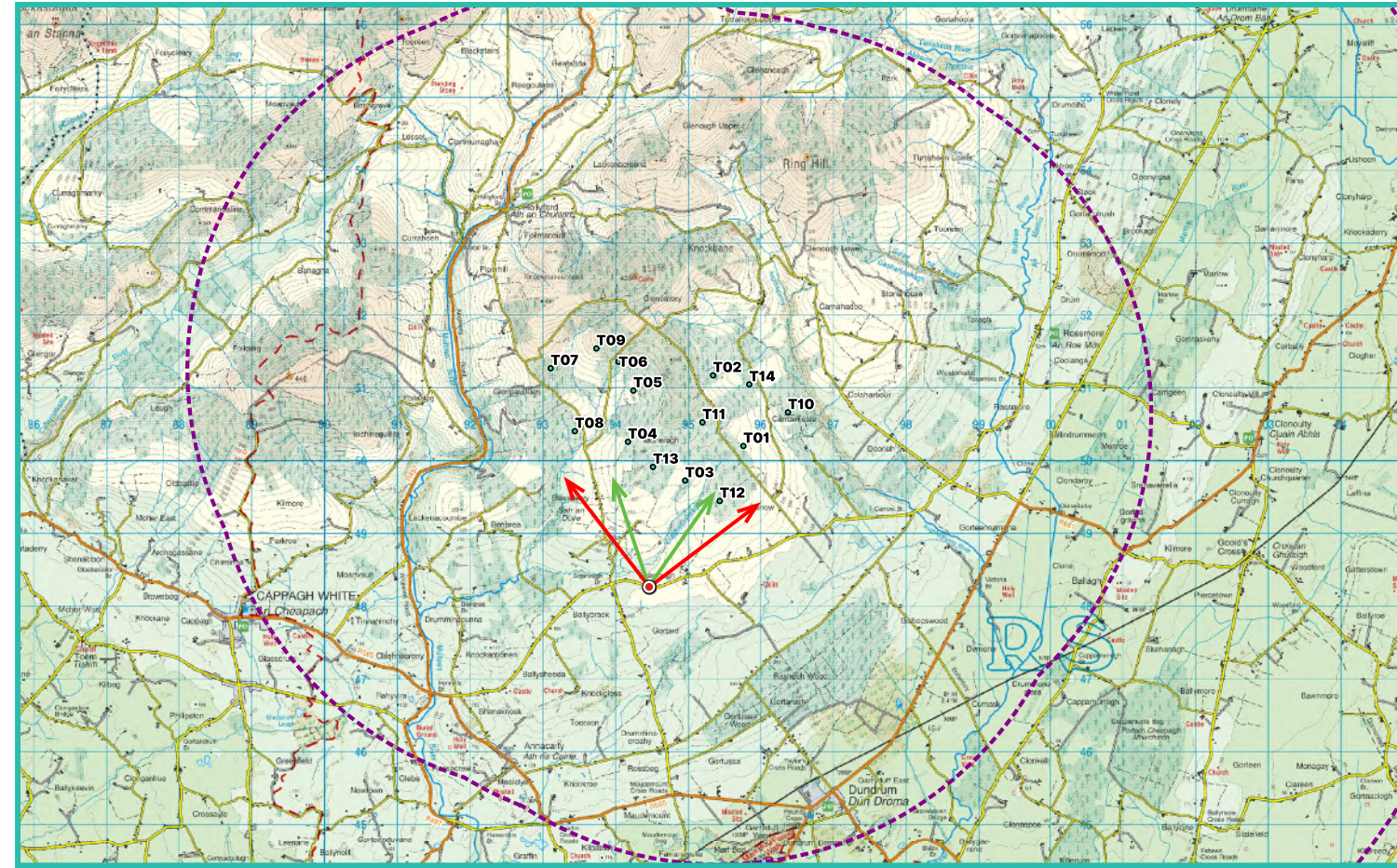
Photomontage 10

View from the L1282 Local Road in the townland of Scarrough. Located approximately 1.5km south-west of the nearest turbine (T12).

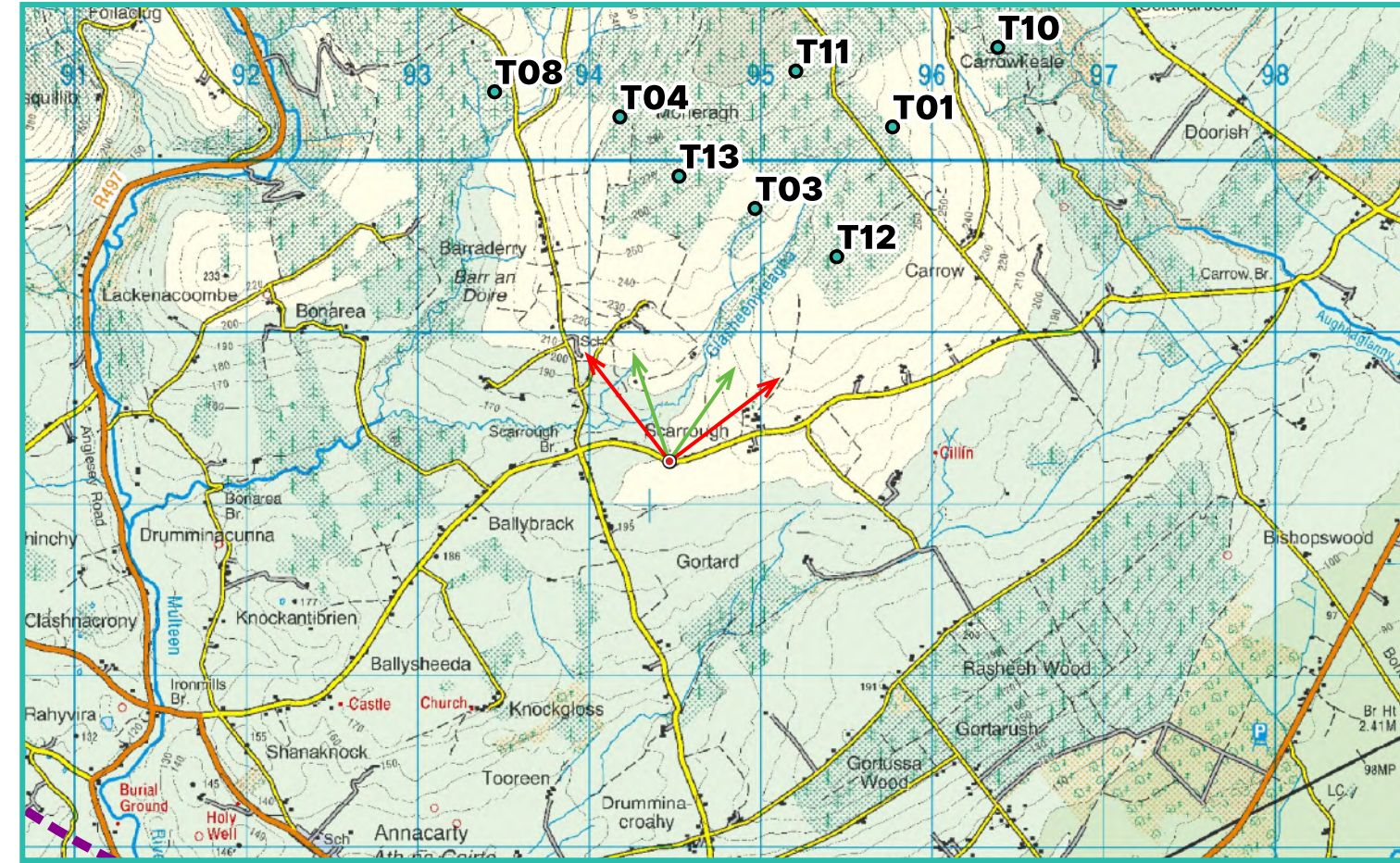
View point grid reference	E 594430 N 648290
Date of image taken	2024-09-11
Time of image taken	14:09
View point elevation	200m
Angle of Views	90° / 53.5°
View Direction (Image Centre)	7°
Number of proposed turbines visible in Photomontage	11/14
Turbine Hub Height	103.5m
Turbine Rotor Diameter	163m
Turbine Tip Height	185m
Montage Type	Type 4 Photomontage / Survey / Scale Verifiable
Camera & Lens	Canon 5D Mark III / Full Frame Sensor with a 50mm Lens
Tripod	Manfrotto 190X extended to approx 1.5m.
Map Licence	© Ordnance Survey Ireland. All rights reserved. Licence number CYAL50267517



View point relative to 20km radius.



View point relative to proposed wind farm site.



Detail of view point location.

Map Legend

Area shown in 90° view

Area shown in 53.5° view

View Point

Proposed Carrow Wind Farm

Wireline Legend

Proposed Carrow Wind Farm

Proposed Met Mast (103.5m)

Existing Wind Farms

Permitted Wind Farms

Proposed Wind Farms

Prepared by

MKO
Planning & Environmental Consultants
Tuam Road, Galway.

Tel: (091) 73 56 11
E-mail: info@mkoireland.ie
Website: www.mkoireland.ie

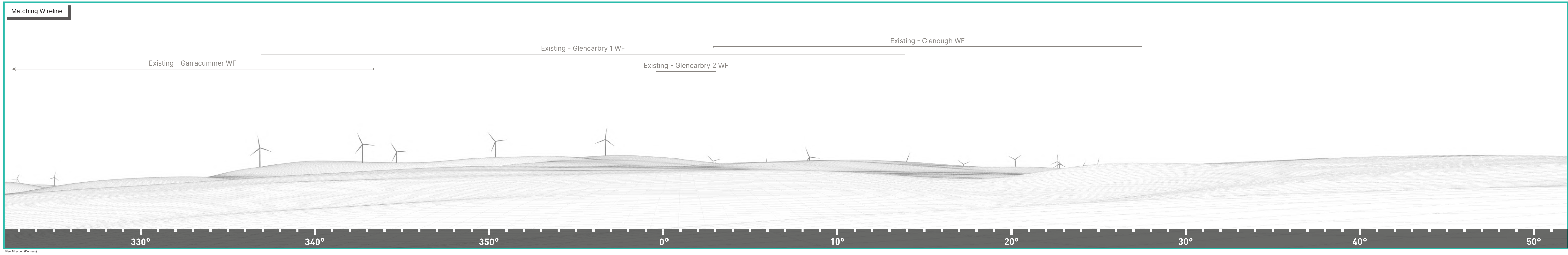


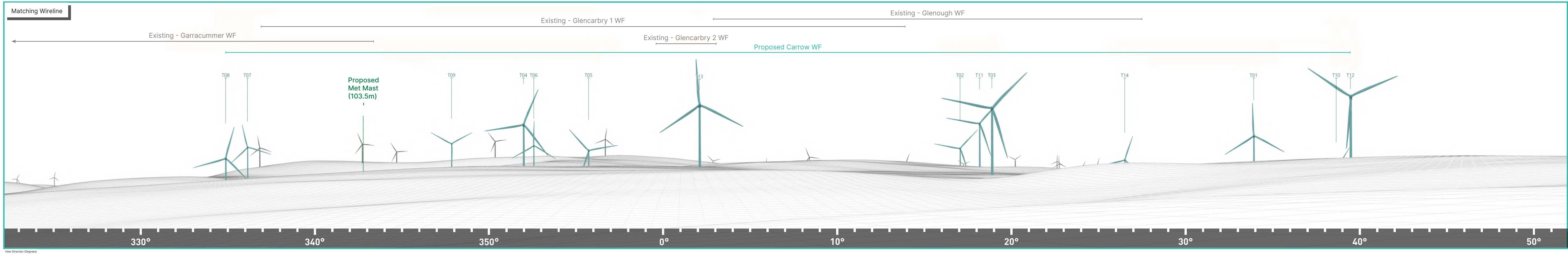
90° View Extent

Key Image at 120°



53.5° View Extent





Proposed Photomontage with Cumulative at 53.5°



